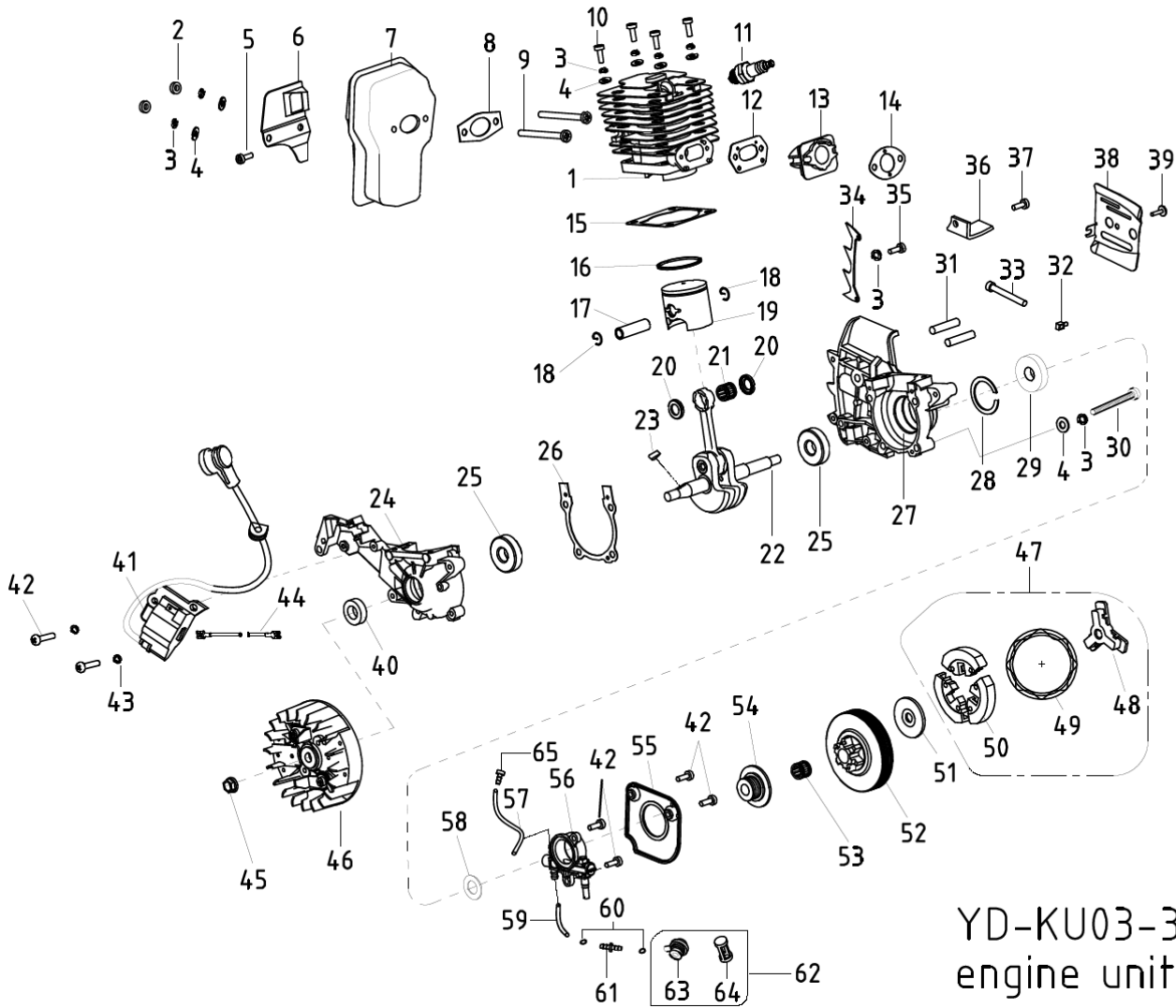




Petrol chainsaw TRC38/40 CS
Ref: TRT911197 Gencod:3700169111971



YD-KU03-38A
engine unit

ITEM	PART NUMBER	PART DESCRIPTION	INTERNAL CODE	QTY PER PRODUCT
1	SGTR38M01	CYLINDER BODY	YD38-3.01.00-1	1
2	SGTR38M02	NUTM5	GB/T6185.1	2
3	SGTR95003B	WASHER 5	GB/T93	11
4	SGTR95004B	WASHER 5	GB/T97.1	10
5	SGTR95013B	SCREW M5x14	GB/T2672	1
6	SGTR38M06	SILENCER COVER PLATE	YD38-3.01.09.00-1	1
7	SGTR38M07	SILENCER BODY	YD38-3.01.09.00-00	1
8	SGTR38M08	SILENCER SEALING PLATE	YD38-3.01.00-6	1
9	SGTR38M09	MUFFLER CONNECTING SCREW	YD38-3.01.00-10	1
10	SGTR95009B	SCREW M5x20	GB/T6191	4
11	SGTR38M11	SPARK PLUG NHSP LD L8RTF	YD38-3.01.11.05-00	1
12	SGTR38M12	AIR INTAKE TUBE SEALING PLATE	YD38-3.01.00-7	1
13	SGTR38M13	AIR INTAKE TUBE	YD38-3.01.00-3	1
14	SGTR38M14	CARBURETOR SEALING PLATE	YD38-3.01.00-8	1

15	SGTR38M15	CYLINDER SEALING PLATE	YD38-3.01.00-5	1
16	SGTR38M16	PISTON RING	YD38-3.01.03.00-2	1
17	SGTR38M17	PISTON PIN	YD38-3.01.03.00-3	1
18	SGTR38M18	PISTON PIN CIRCLIP	YD38-3.01.03.00-4	2
19	SGTR38M19	PISTON	YD38-3.01.03.04-00	1
20	SGTR38M20	NEEDLE BEARING RING	YD38-3.01.03.00-5	2
21	SGTR38M21	NEEDLE BEARING 10x14x11	YD38-3.01.03.02-00	1
22	SGTR38M22	CRANK SHAFT COMPONENTS	YD38-3.01.03.01-00	1
23	SGTR4504	SEMICIRCULAR KEY 3x3.5x10	GB/T1099	1
24	SGTR38M24	LEFT CRANK CASE	YD38-3.01.01.00-1	1
25	SGTR38M25	BEARING 6201 GRADE D 12x32x11	GB/T276/D12X32X55	2
26	SGTR38M26	CASE BODY SEALING PLATE	YD38-3.01.01.00-3	1
27	SGTR38M27	RIGHT CRANK CASE	YD38-3.01.01.00-2	1
28	SGTR4552	SHIELD RING 32	GB/T893.1	1
29	SGTR38M29	OIL SEAL 12x32x5.5	YD38-3.01.01.01-00	1
30	SGTR95009B	SCREW M5x30	GB/T6191	4
31	SGTR4522	DOUBLE-SCREW BOLT AYM8-M8x	GB/T900	2
32	SGTR38M32	TENSION BLOCK	YD38-3.01.00-9	1
33	SGTR38M33	ADJUST SCREW M5x48	GB/T9074.1	1
34	SGTR4511	SPIKE BUMPER	YD45.01.00-21	1
35	SGTR95013B	SCREW M5x12	GB/T2672	1
36	SGTR38M36	CHAIN CATCHER	YD38-3.01.00-15	1
37	SGTR38M37	CHAIN CATCHER SCREW	YD38-3.01.00-16	1
38	SGTR38M38	DAMPER	YD38-3.01.00-4	1
39	SGTR95013B	SCREW M4x10	GB/T2672	1
40	SGTR38M40	OIL SEAL 12x22x7	YD38-3.01.01.02-00	1
41	SGTR38M41	IGNITER	YD38-3.01.11.01-00	1
42	SGTR95013B	SCREW M4x14	GB/T2672	6
43	SGTR95003B	WASHER 4	GB/T93	2
44	SGTR38M44	EXTINCTION CONDUCTOR	YD38-3.01.11.02-00	1
45	SGTR95086B	NUT M8x1	GB/T6177.2	1
46	SGTR38M46	FLYWHEEL ASSEMBLY	YD38-3.01.10.00-00	1
47	SGTR38M47	CLUTCH ASSEMBLY	YD38-3.01.13.00-00	1
48	SGTR38M48	RETAINER	YD38-3.01.13.01-1	1
49	SGTR38M49	CLUTCH EXTENSION SPRING	YD38-3.01.13.01-3	1
50	SGTR38M50	SHOE BLOCK	YD38-3.01.13.01-2	3
51	SGTR38M51	CLUTCH ADJUSTING WASHER	YD38-3.01.13.00-2	1
52	SGTR38M52	CLUTCH SHELL	YD38-3.01.13.00-1	1
53	SGTR38M53	NEEDLE BEARING 10x13x13	YD38-3.01.00.01-6	1
54	SGTR25233	WORM	YD38-3.01.00-11	1
55	SGTR38M55	COVER PLATE	YD38-3.00.00-12	1
56	SGTR25234	OIL PUMP	YD38-3.01.15.00-00	1
57	SGTR38M57	OIL OUTGOING TUBE 3x6.5x75	YD38-3.01.00-13	1
58	SGTR38M58	WORM WASHER 10x18x1	YD38-3.01.00-12	1
59	SGTR38M59	OIL INGOING TUBE 3.5x6.5x68	YD38-3.00.00-2	1
60	SGTR95074A	OIL TUBE CIRCLIP	YD38-3.00.00-17	2
61	SGTR2515	TIE-IN	YD38-3.00.00-3	1

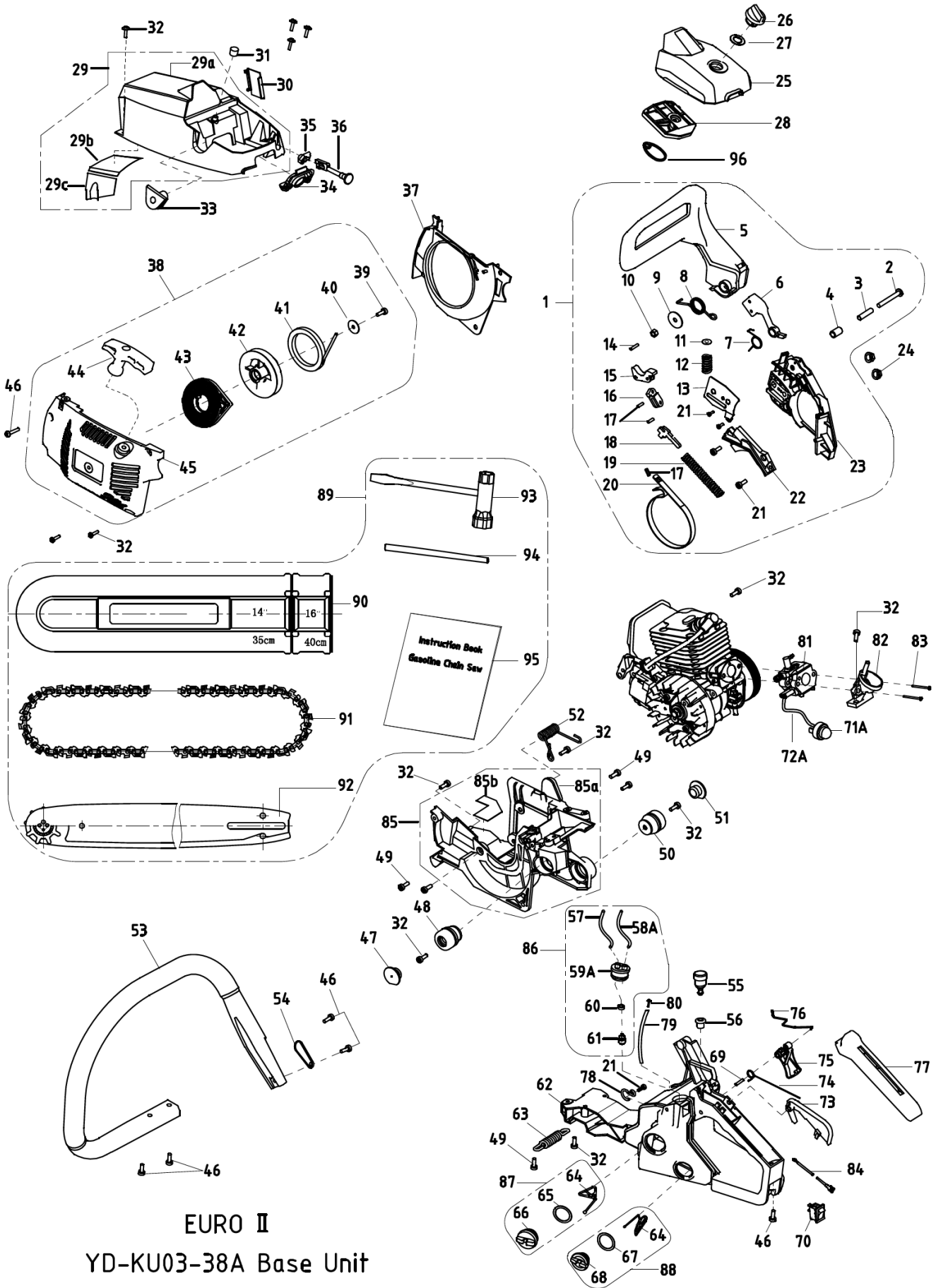
62	SGTR38M62	BASE ASSEMBELY	YD38-3.00.00-16	1
63	SGTR38M63	NOZZLE	YD38-3.03.00-11	1
64	SGTR38M64	FILTER NET	YD38-3.03.00-12	1
65	SGTR38M65	SPRAY NOZZLE	YD38-3.01.00-14	1

YD-KU03-38A maj06042014



Petrol chainsaw TRC38/40 CS

Ref: TRT911197 Gencod:3700169111971



EURO II
YD-KU03-38A Base Unit

ITEM	PART NUMBER	PART DESCRIPTION	INTERNAL CODE	QTY PER PRODUCT
1	SGTR3801	RIGHT COVER ASSEMBLY	YD38-3.04.00-00	1
2	SGTR3802	SCREW M5x40	YD38-3.04.00-16	1
3	SGTR3803	PIN GLAND 5x6.3x30	YD38-3.04.00-13	1
4	SGTR3804	HEAVY BROCK GLAND 6.3x9x15	YD38-3.04.00-12	1
5	SGTR3805	FRONT DAMPER	YD38-3.04.00-2	1
6	SGTR3806	HEAVY BLOCK	YD38-3.04.02-00	1
7	SGTR3807	HEAVY BLOCK SPRING	YD38-3.04.00-7	1
8	SGTR3808	BRAKE TORSION ROD SPRING	YD38-3.04.00-9	1
9	SGTR3809	WASHER 5.2x23x1.2	YD38-3.04.00-14	1
10	SGTR3810	LOCK- NUT M5	GB/T6185.1	1
11	SGTR3811	SPRING BASE	YD38-3.04.00-6	1
12	SGTR25203	FRONT GUARD SPRING	YD38-3.04.00-5	1
13	SGTR3813	TENSIONER COVER PLATE	YD38-3.04.00-15	1
14	SGTR4546	PIN 3x14	GB/T119.2	1
15	SGTR3815	MAIN LEVEL	YD38-3.04.00-4	1
16	SGTR3816	SECONDARY PULL-ROD	YD38-3.04.00-3	1
17	SGTR4546	PIN 3x9	GB/T119.2	3
18	SGTR3818	BREAK CONTROL ROD	YD38-3.04.00-11	1
19	SGTR3819	BRAKE SPRING	YD38-3.04.00-8	1
20	SGTR3820	BREAK STRAP	YD38-3.04.00-10	1
21	SGTR3821	TAPPING SCREW ST4.2x9.5	GB/T845/4,2X9,5	5
22	SGTR3822	BREAK SPRING COVER PLATE	YD38-3.04.00-1	1
23	SGTR3823	RIGHT COVER	YD38-3.04.01-00	1
24	SGTR45221	NUT M8	GB/T6177.1	2
25	SGTR3825	AIR FILTER COVER	YD38 -3.05.00-2	1
26	SGTR3826	AIR FILTER LOCK NUT	YD38-3.05.01-00	1
27	SGTR3827	LOCK NUT WASHER 15x26x1	YD38-3.05.00-6	1
28	SGTR3828	AIR FILTER	YD38-5.01.08.00-00	1
29	SGTR3829	UPPER COVER ASSEMBLY	YD38-3.05.00-00	1
29a	SGTR3829A	UPPER COVER	YD38-3.05.00-1	1
29b	SGTR3829B	UPPER HEAT ISOLATION PLATE	YD38-3.05.00-8	1
29c	SGTR3829C	SIDE HEAT ISOLATION PLATE	YD38-3.05.00-9	1
30	SGTR3830	ANTI-FREEZE BLOCK	YD38-3.05.00-5	1
31	SGTR3831	SHOCK BLOCK	YD38-3.05.00-4	1
32	SGTR25252	TAPPING SCREW ST4.8x16	GB/T845/4,8X16	12
33	SGTR3833	IDLE ADJUSTING GUIDE SET	YD38-3.05.00-3	1
34	SGTR3834	DUST SHIELD	YD38-3.00.00-7/GY	1
35	SGTR3835	CHOKE LEVER RETAINING BRACKET	YD38-3.00.00-11	1
36	SGTR3836	CHOKE LEVER	YD38-3.00.00-10	1
37	SGTR3837	BOSSING	YD38-3.02.00-1	1
38	SGTR3838	STARTER ASSEMBLY	YD38-3.02.00-00	1
39	SGTR3839	TAPPING SCREW ST4.8x13	GB/T845/48X13	1
40	SGTR95018A	WASHER 5	GB/T96/D5	1
41	SGTR3841	START STRETCHING WIRE3x920	YD38-3.02.00-6	1
42	SGTR3842	START PLATE	YD38-3.02.00-2	1
43	SGTR3843	START COIL-SPRING	YD38-3.02.00-5	1
44	SGTR3844	START HANDLE	YD38-3.02.00-4	1
45	SGTR3845	START COVER	YD38-3.02.01-00	1
46	SGTR3846	TAPPING SCREW ST4.8x25	GB/T845/48X25	6
47	SGTR3847	DUST COVER1	YD38-3.00.00-9	1
48	SGTR3848	CUSHION SOCKET 1	YD38-3.06.04-00	1

ITEM	PART NUMBER	PART DESCRIPTION	INTERNAL CODE	QTY PER PRODUCT
49	SGTR95035A	SCREW M5x14	GB/T818	5
50	SGTR3850	CUSHION SOCKET 2	YD38-3.06.03-00	1
51	SGTR3851	DUST COVER 2	YD38-3.00.00-8	1
52	SGTR3852	FRONT HANDLE SPRING	YD38-3.00.00-4	1
53	SGTR3853	FRONT HANDLE	YD38-3.00.00-1	1
54	SGTR3854	TORSION ROD SPRING COVER PLATE	YD38-3.00.00-13	1
55	SGTR3855	BALANCER BODY ASSEMBLY	YD38-3.03.06-00	1
56	SGTR25241	BALANCER ROOT	YD38-3.03.00-3	1
57	SGTR3857	FUEL TUBE	YD38-3.03.00-1	1
58A	SGTR3858	SCAVENGE TUBE	YD38-3.03.00-1A	1
59A	SGTR3859	TUBE ROOT	YD38-3.03.00-2A	1
60	SGTR3860	CLUMP WEIGHT	YD38-3.03.00-12	1
61	SGTR3861	FUEL FILTER ASSEMBLY	YD38-3.03.04-00	1
62	SGTR3862	BASE	YD38-3.03.01-00	1
63	SGTR3863	BASE SPRING	YD38-3.00.00-5	1
64	SGTR3864	ANTI-DROP PLATE	YD38-3.03.03-2	1
65	SGTR3865	PACKING WASHER 24x34x1.5	YD38-3.03.02-3	1
66	SGTR3866	PETROL COVER	YD38-3.03.02-1	1
67	SGTR3867	PACKING WASHER 20x30x2	YD38-3.03.03-3	1
68	SGTR3868	OIL COVER	YD38-3.03.03-1	1
69	SGTR4546	PIN 5x24	GB/T119.2	1
70	SGTR25142	EXTINCTION SWITCH	YD38-3.01.11.04-00	1
71A	SGTR25239	FUEL PUMPING BULB2.5x5x175	YD38-3.03.00-4A	1
72A	SGTR95076A	PUMP TUBE	YD45-4.03.00-13	1
73	SGTR3873	TRIGGER CONTROL RACK	YD38-3.03.00-9	1
74	SGTR3874	TRIGGER TORSION ROD SPRING	YD38-3.03.00-8	1
75	SGTR3875	TRIGGER	YD38-3.03.00-7	1
76	SGTR3876	THROTTLE ROD	YD38-3.00.00-6	1
77	SGTR3877	HANDLE COVER	YD38-3.03.00-10	1
78	SGTR3878	CIRCLIP FOR NOZZLE	YD38-3.03.00-16	1
79	SGTR25238	VENT TUBE 3.5x6.5x80	YD38-3.03.00-5	1
80	SGTR25246	TAPPING SCREW ST4.2x14	GB/T845/4,2X16	1
81	SGTR3881	CARBURETOR	YD38-3.01.06.00-00	1
82	SGTR3882	AIR INTAKE SOCKET	YD38-3.01.00.02-00	1
83	SGTR3883	CARBURETOR SCREW	YD38-3.01.00.03-00	2
84	SGTR3884	GROUND CONDUCTOR	YD38-3.01.11.03-00	1
85	SGTR3885	ENGINE BASE ASSEMBLY	YD38-3.06.01-00c	1
85a	SGTR3885A	ENGINE BASE	YD38-3.06.01-00	1
85b	SGTR3885B	ENGINE BASE HEAT ISOLATION PLATE	YD38-3.06.01-2	1
86	SGTR3886	FUEL TUBE ASSEMBLY	YD38-3.03.05-00	1
87	SGTR3887	PETROL CAP ASSEMBLY	YD38-3.03.02-00	1
88	SGTR3888	OIL CAP ASSEMBLY	YD38-3.03.03-00	1
89	SGTR3889	ACCESSORIES	YD38-3.08.00-00	1
90	SGTR3890	BAR COVER	YD38-3.07.00-00	1
91	SGTR3891	CHAIN	YD38-3.07.02-00	1
92	SGTR3892	GUIDE BAR	YD38-3.07.01-00	1
93	SGTR3893	PLUG WRENCH	YD38-3.08.01-00	1
94	SGTR3894	FILE	YD38-3.08.04-00	1
95	SGTR3895	USER'S MANUAL	YD38-3.08.03-00	1